

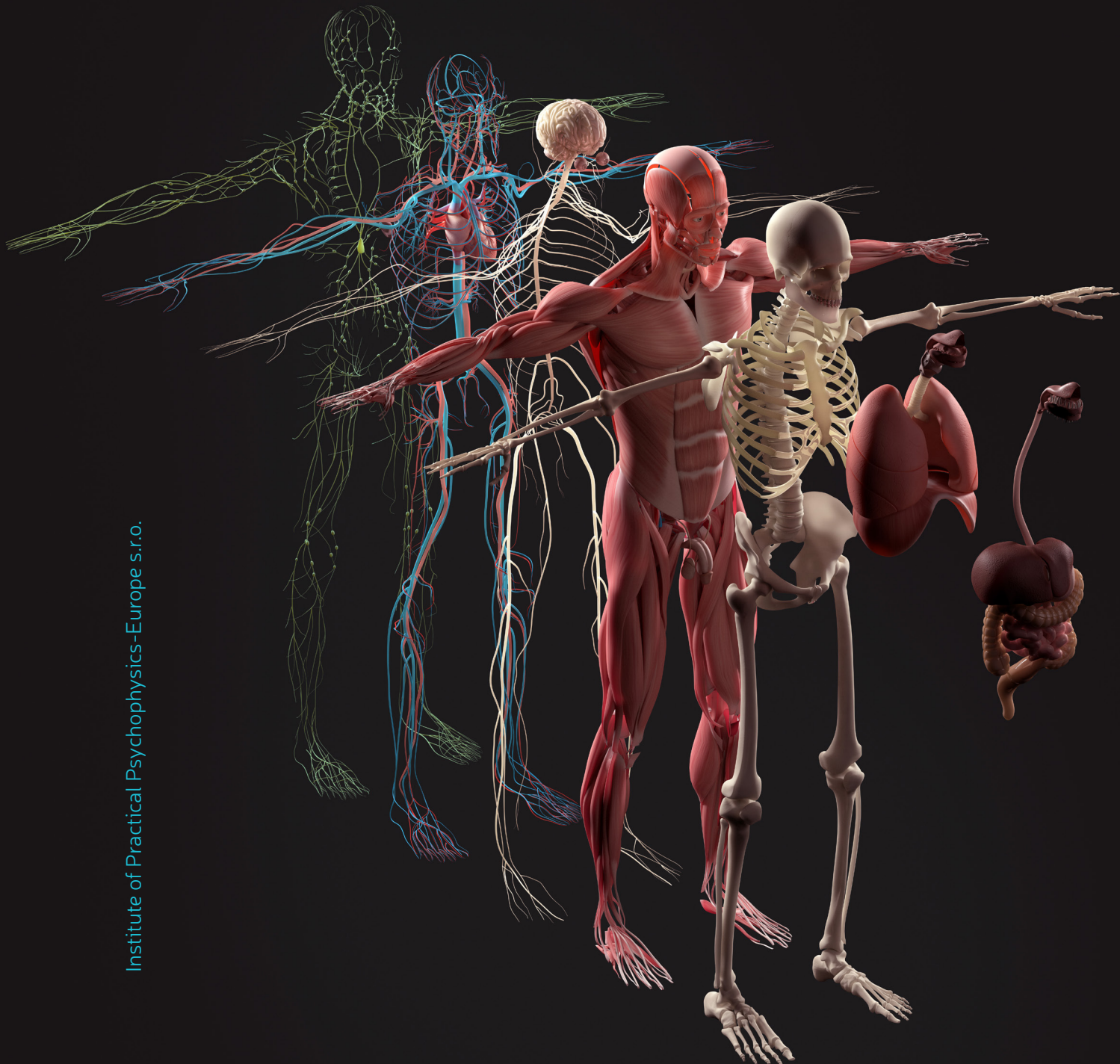
METATRON[®]

Nonlinear Diagnostic System

Institute of Practical Psychophysics-Europe s.r.o.

NEW Generation of **NLS**-analysis Systems

www.nls-metatron.eu



PERFECT TOOL
FOR THE MEDICAL FIELD
AND HEALTH CARE
SPECIALISTS

CONTENT

7 ADVANTAGES OF THE “METATRON-4025”

8 OPERATING PRINCIPLE

10 15 REASONS WHY OUR CLIENTS CHOOSE US

THE LINEUP

28 INTRUDER
32 METAPATHIA GR CLINICAL
34 METAPATHIA GR HOSPITAL
36 COMMON FUNCTIONS OF SOFTWARE
38 PRANA
40 SAKURA
42 RED DRAGON
44 GOLDEN DRAGON

46 COMPARATIVE TABLE

48 ORIGINAL EQUIPMENT OF “METATRON”

Hardware-software system of nonlinear (NLS) diagnostics “Metatron-4025” is a new generation of medical analysis system allowing to make accurate determination of the body’s actual condition and all its organs and systems.



Vladimir Nesterov
Academician.
The founder of the Institute of
Practical Psychophysics.
Creator of equipment for
NLS-diagnostics.

A PERFECT INVESTMENT FOR THOSE WHO WANT TO START **MEDICAL AND HEALTHCARE BUSINESS**

OUR PRODUCTS ARE ALREADY USED BY



Doctors and medical practitioners



Medical Clinics



Diagnostic rooms



Sanatorium resorts



Oriental Medicine Centers



Scientific research centers



Fitness centers and spas



Sports Medicine Specialists



Distributors of phytopreparations and dietary supplements



IRON®
Acoustic System



ADVANTAGES OF THE “METATRON-4025”

ACCURACY

Confirmed by clinical tests, the “Metatron’s” accuracy of finding acute and chronic processes and also pathogens affecting the organism, is 79,7 %.

UNICITY

“Metatron” is the first diagnostic system in the world, corresponding all the current requirements – portable, informative, user friendly, concurrently legal and secure. We spent almost 25 years to its elaboration and modernization.

VARIETY OF DATA RECEIVED

Apart from determining actual condition of all systems, organs and energetically active cells, “Metatron” allows to find viruses, allergens, infections, parasites, show content of microelements, make forecasts and give recommendations for treatment and preventive maintenance of problems detected.

USER FRIENDLY

Simple and clear interface of the program allows to make diagnostics after a two-day basic training. Device fits in the portable case, preparing to work takes less than 5 minutes.

WIDE APPLICATION FIELD

“Metatron” has already shown its effectiveness in a completely different areas related to process improvement, control organism condition and the influence of an external factor. Device is used worldwide. The list of software language versions is regularly extended.

OPERATING PRINCIPLE

BIORESONANCE OR NLS-DIAGNOSTICS IS THE READING, PROCESSING, ANALYZING OF INFORMATION DISCERNED FROM THE OUTPUT OF ELECTROMAGNETIC WAVES ISSUED BY THE HUMAN BODY, INCLUDING DNA AND CHROMOSOMES

SCANNING

Scanning is accomplished by means of bioinductors – special trigger sensors capable of measuring the state of all cells in the human body, as well as the activity of bacteria, parasites and other infectious agents inhabiting it. As opposed to others, Me-tatron® targets the subcortical brain – the largest repository of information about the ongoing processes within an organism.



DATA RECEIVED

Information received during a short scan (20 min) are reformed in a digital signal, which subsequently treated and analyzed using a special software by comparison with optimal rates, written in a database. Our database contains a total of 10,000 spectral etalons of different processes and preparations, by them the comparison is made.



EVALUATION OF TREATMENT COMPATIBILITY

The “Metatron” also allows to make an estimation of compatibility with certain organism of other preparations, dietary supplements, phytopreparations, foodstuff, minerals and stones not included in a database. By means of special bioresonance camera can be made a spectral characteristic estimation of preparation tested and also its positive rate of influence on one or another process can be seen.

RESEARCH RESULTS

The results of research are the outcome from analysis of different vital activity rates (from the condition of body’s biologically active zones to dietary supplements recommendations). Our software features a system of markers that identify dysfunctional changes in the body, the causes thereof, their expected development, and measure their severity. Recommendations are subsequently provided, and our database features a vast list of appropriate treatments and preventive maintenance.



15 REASONS

WHY OUR CLIENTS HAVE CHOSEN US

1

**“METATRON” MAKES IT POSSIBLE TO
EXAMINE ALL BODY SYSTEMS WITHOUT
EXCEPTIONS IN A SINGLE SESSION**



Nervous system



Musculoskeletal
system



Urinary system



Cardiovascular system



Respiratory system



Reproductive system



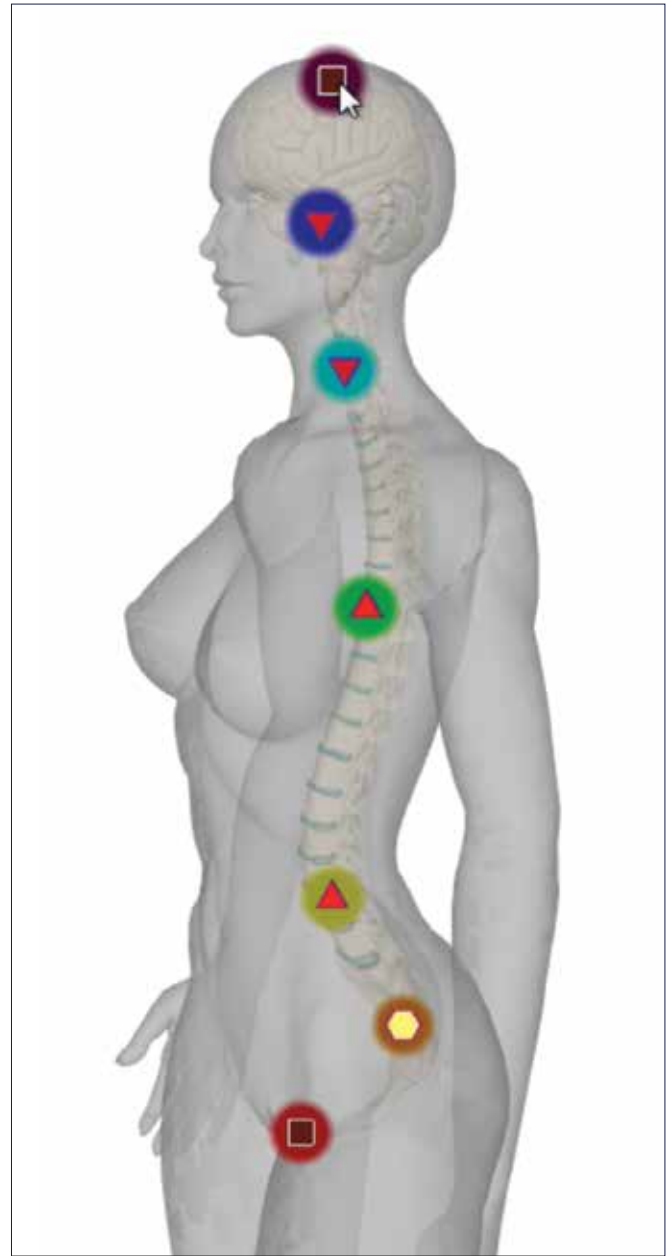
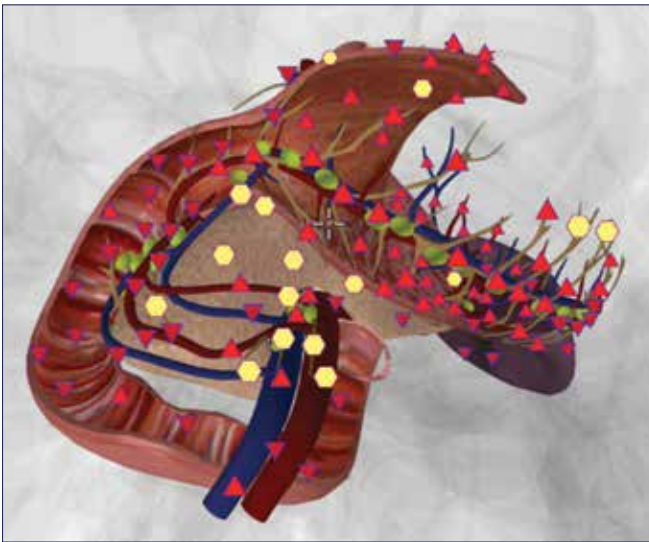
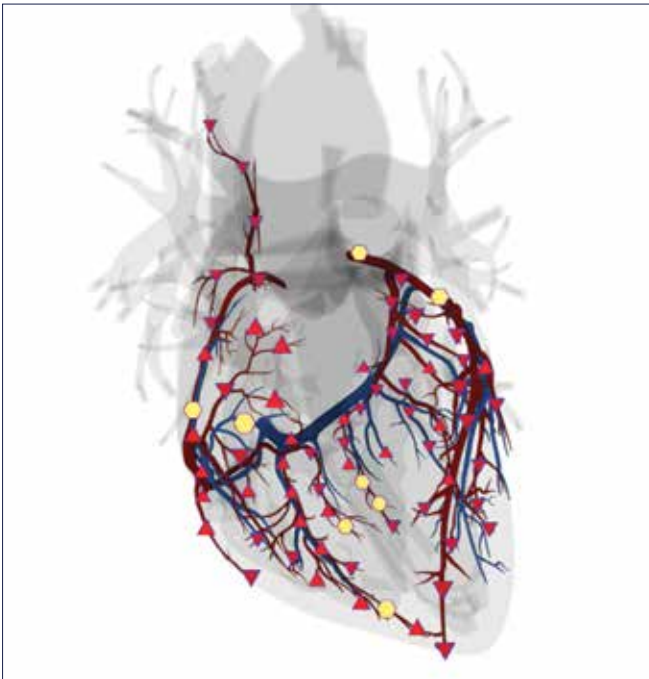
Digestive system



Endocrine system



Skin



2

HIGH ACCURACY OF DIAGNOSTICS ALLOWS TO REVEAL DISEASES IN THE EARLY STAGES OF DEVELOPMENT

AVERAGE ACCURACY OF EXAMINATION ON METATRON CONFIRMED BY CLINICAL RESEARCHES IS 80%.

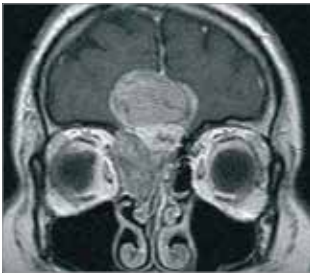
According to this indicator it's not inferior to other hardware methods, and in some cases exceeds them. All thanks to a fundamentally new system of data acquisition and processing, which allows to detect pathology in the early stages of their development.

3

HIGH LEVEL OF VISUALISATION

NLS-DIAGNOSTICS COMPARED WITH OTHER HARDWARE METHODS

Neoplastic process in brain,
frontal view



MRI

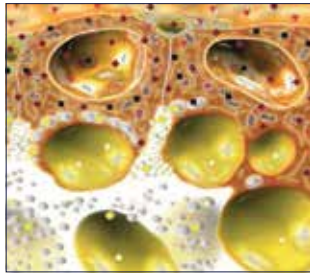


NLS

Neoplastic process in
mammary gland



Ultrasonography

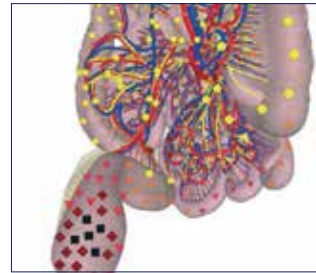


NLS

Neoplastic process
of rectum



Tomography



NLS



4

ABSOLUTELY SAFE AND USER-FRIENDLY

NLS-DIAGNOSTICS WITH METATRON WON'T CAUSE ANY DISCOMFORT OR HARM TO A PATIENT'S HEALTH



Non-invasive



Free of radiation



No internal probing



No need for lab tests*

* Patient's biochemical analysis results (provided by laboratories) can be added to the software and be used during diagnostics

5

MINIMAL TRAINING TIME FOR WORK WITH “METATRON”

COMPARISON OF STANDARD TRAINING TIME OF OTHER TYPES OF HARDWARE DIAGNOSTICS

METATRON

18 hours / 3 days*



ULTRASONOGRAPHY

144 hours / 24 days*



MRI/CT

1960 hours / 327 days*



* At 6-hour school day



PATIENT MEDICAL HISTORY

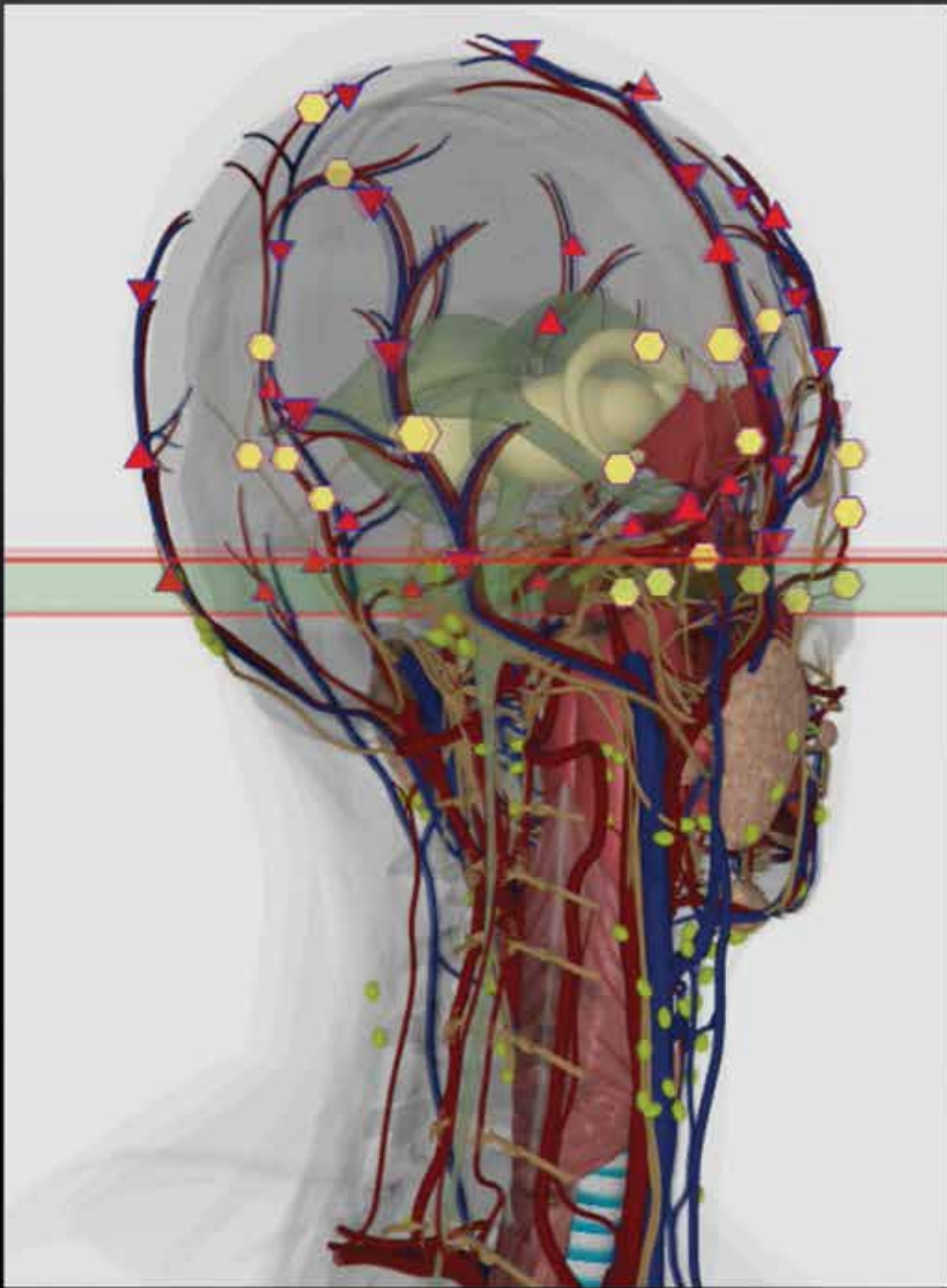
Patient's Name: _____

Social Security Number: _____

Home address: _____

Date of Birth: _____

Business Tel: _____



6

INTUITIVE USER-FRIENDLY INTERFACE OF THE SOFTWARE

7

MULTIFUNCTIONALITY OF DIAGNOSTICS



Evaluation of
predisposition to
various diseases



Monitoring of treatment
and rehabilitation processes



Evaluation of stress
adequacy in sports



Identification of
allergens



Detection viruses,
bacteria, parasites

8

INDIVIDUAL SELECTION OF DRUGS AND DIETS



Drugs



Dietary supplements



Lithotherapy



Preparations of
Oriental medicine



Phytopreparations



Bach flower essences



Homeopathy



Food and Drinks



9

THERAPEUTICAL FEATURES OF “METATRON”

HSS “METATRON” MAKES IT POSSIBLE NOT ONLY TO EVALUATE A CHARACTER AND SEVERITY OF HEALTH PROBLEMS, BUT TO ELIMINATE THEM DIRECTLY AS WELL

The core of nonlinear informational correction lies in a transmission of a signal about the correct resonance frequency on which all systems, organs, tissues, cells, subcellular and molecular structures must normally operate, to a biological system.

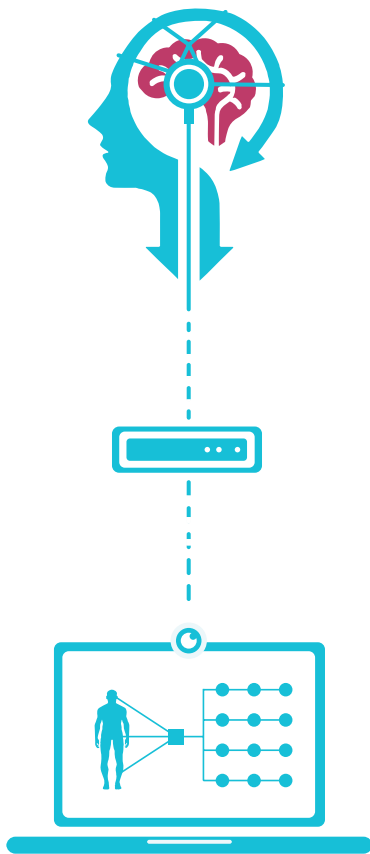
The information is transmitted by several ways:

- **nosode therapy** (Information is saved on a special matrix, namely, spirits, water, sugar and will be introduced to an organism with a regular oral intake of nosodes).
- **metatherapy** (signal is transmitted through a system of bio-inductors directly to an organism, correcting a frequency of dysregulated (due to some reasons) cells. If needed, this information can be endowed with destructive properties – by tuning to a frequency that damages various infectious agents (viruses, parasites, bacteria and others).

10

DIAGNOSTICS PROCESS IS MUCH EASIER AND BETTER UNDERSTANDABLE

A STANDARD DIAGNOSTIC PROCEDURE USING HSS “METATRON”



1. Conversation with the patient

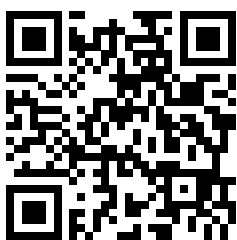
The session starts with a small-talk in order to calm a patient and to establish credibility (psychological condition of a patient has direct influence on the accuracy of the diagnostics). Other special conditions to provide a diagnostic are not necessary – the patient just needs to be at the normal, balanced state.

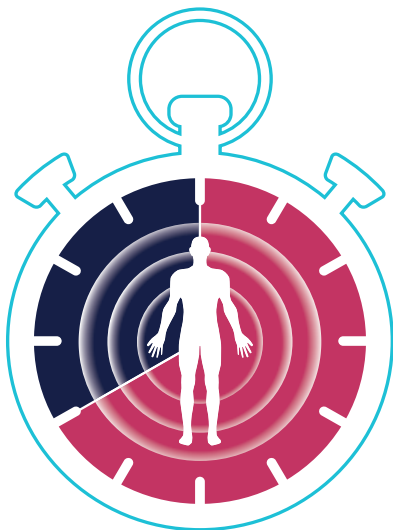
2. 3D scanning

Trigger sensors, that built into a stereoscopic “Sony” headset, carry out 3D scanning of all or separate systems of an organism (altogether there are 4 modes of investigation: express, standard, detailed and a special one for particular organs). During this procedure 12 various states of cells and tissues are displayed on their virtual models (on the display), using the special color-coded Fleindler’s scale. This makes possible for a specialist even at this stage to identify problematic areas for a later detailed examination.

3. Research

Specialist examines all areas and organs which are identified as problematic in details. Intuitive interface and a visualization system for 3D models of organs and tissues make the detailed examination of a specific organ (down to its cub-cellular and molecular structures) possible. 4D TISSUE system allows seeing of an affected nidus at a desired perspective.





40 MINUTES
AVERAGE DIAGNOSTIC
TIME USING
HSS "METATRON"

4. Final examination protocol

A specialist instantly adds revealed pathologies, infectious agents or other functional deviations, into the final examination report (epicrisis). The epicrisis can also include recommendations about treatment, preventive measures, diet, which are automatically formed from the etalons database (each etalon has its own description).

5. Print epicrisis

The epicrisis is given to a patient in a printed form. Then two options are available – repeated diagnostics after recommended treatment or rehabilitation course (if some serious health issues are revealed, the patient is recommended to visit a specialist in some specific area) or a course of bio-resonance therapy by means of HSS "Metatron" in several forms: metatherapy, phytotherapy, lithotherapy and nosode therapy.

11

WE ARE DYNAMICALLY PROGRESSING

WE CONSTANTLY MODIFY THE HARDWARE AND UPDATE THE SOFTWARE APPLICATIONS, ADDING NEW FEATURES AND ETALONS MOREOVER, WE ARE ADAPTING THEM TO DIFFERENT REGIONS

MAIN STAGES OF OUR DEVELOPMENT

2005	 Emerald NutriSoft	Metatron 4017
2006	 HUNTER [®] Metapathia GR	Metatron 4025
2011	 CLINICAL [®] Metapathia GR	Metatron 4025
2012	 RED DRAGON	Metatron 4025
2015	 GOLDEN DRAGON	Metatron 4025M
2015	 HOSPITAL [®] Metapathia GR	Metatron 4025M
2016	 SAKURA [®]	Metatron 4025M
2016	 prana [®]	Metatron 4025M
2018	 INTRUDER [®]	Metatron 4025M

12

AFFORDABLE PRICES FOR EVERYONE





13

CUSTOMER SUPPORT

WE PROVIDE A FULL PACKAGE OF REGULAR TECHNICAL AND INFORMATIONAL SUPPORT FOR OUR CUSTOMERS, INCLUDING POSTSALES SERVICE



Full warranty maintenance within 18 months



Immediate answer to any questions through any communication channels



Immediate replacement of hardware elements



Remote solving of software problems



Regular newsletter about news and software updates



All necessary promotional materials at your disposal

14

POSSIBILITIES FOR DEVELOPMENT YOUR BUSINESS

WE HAVE A CLEAR VISION HOW TO USE ALL "METATRON" FEATURES TO DEVELOP YOUR BUSINESS

- ✓ Establishing of diagnostic centers or medical rooms.
 - ✓ Adding additional services to medical clinics and practitioners range with mobile diagnostics systems (visiting patients at home or work place).
 - ✓ Extending of services range of health centers through the cooperation with distributors of medical and homeopathic products.
-



15 MEDICAL EQUIPMENT QUALITY AND SAFETY

WE REGULARLY GO THROUGH CLINICAL TESTING AND CERTIFICATIONS, ACCORDING TO THE MAIN CRITERIA OF QUALITY AND SAFETY FOR MEDICAL DEVICES

We are holders of:



ISO 13485 – International Quality Certificate (industry standard for manufacturers of medical devices).



CE – mark of conformity to the European Union standards on product safety to human health and the environment.



FDA – mark of conformity to the Ministry of Health of the United States standards on food safety, drugs, cosmetics and medical devices.

INSTITUTE OF PRACTICAL PSYCHOPHYSICS

WE ARE THE ORIGINAL
DEVELOPERS OF BOTH
THE NLS-DIAGNOSTIC METHOD
AND ORIGINAL EQUIPMENT
FOR ITS APPLICATION.
ALL SIMILAR DEVICES ARE JUST
A HOLLOW ATTEMPT TO COPY US.

Our statistics for 20 years:

8000 units sold
in 6 different versions

15 versions of software
developed available in 8 languages
eng / de / esp / fr / it / jpn / chi / rus

700 scientific conferences
organized more than 3,000 people from
34 countries participated

12 000 etalons
are already in our database
their number is constantly growing



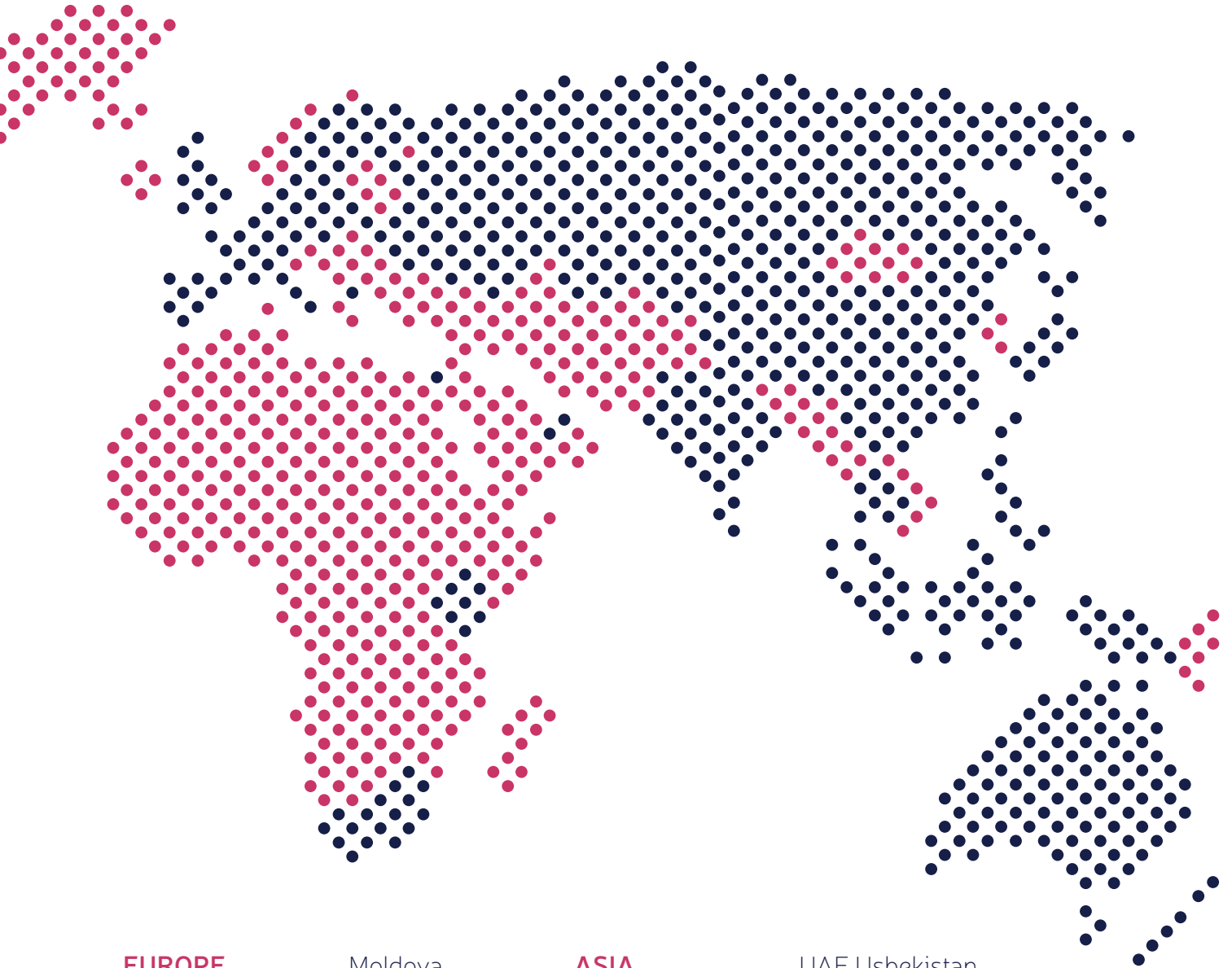
••• countries, where
we are already
represented

••• countries, where
we are not yet
represented

We are
represented

in **50**
countries

WE ARE N° 1



EUROPE

Austria
Belgium
Bulgaria
Czech Republic
France
Germany
Great Britain
Italy
Latvia
Lithuania
Macedonia

Moldova
Netherlands
Poland
Portugal
Romania
Russia
Serbia
Slovakia
Spain
Sweden
Switzerland
Ukraine

ASIA

China
India
Indonesia
Israel
Japan
Kazakhstan
Malaysia
Pakistan
Philippines
South Korea
Taiwan

UAE
Usbekistan
Thailand
Sri-Lanka

AUSTRALIA

Australia
New Zealand

AMERICA

Argentina
Canada
Chile

Columbia
USA
Venezuela
Mexico
Brazil

AFRICA

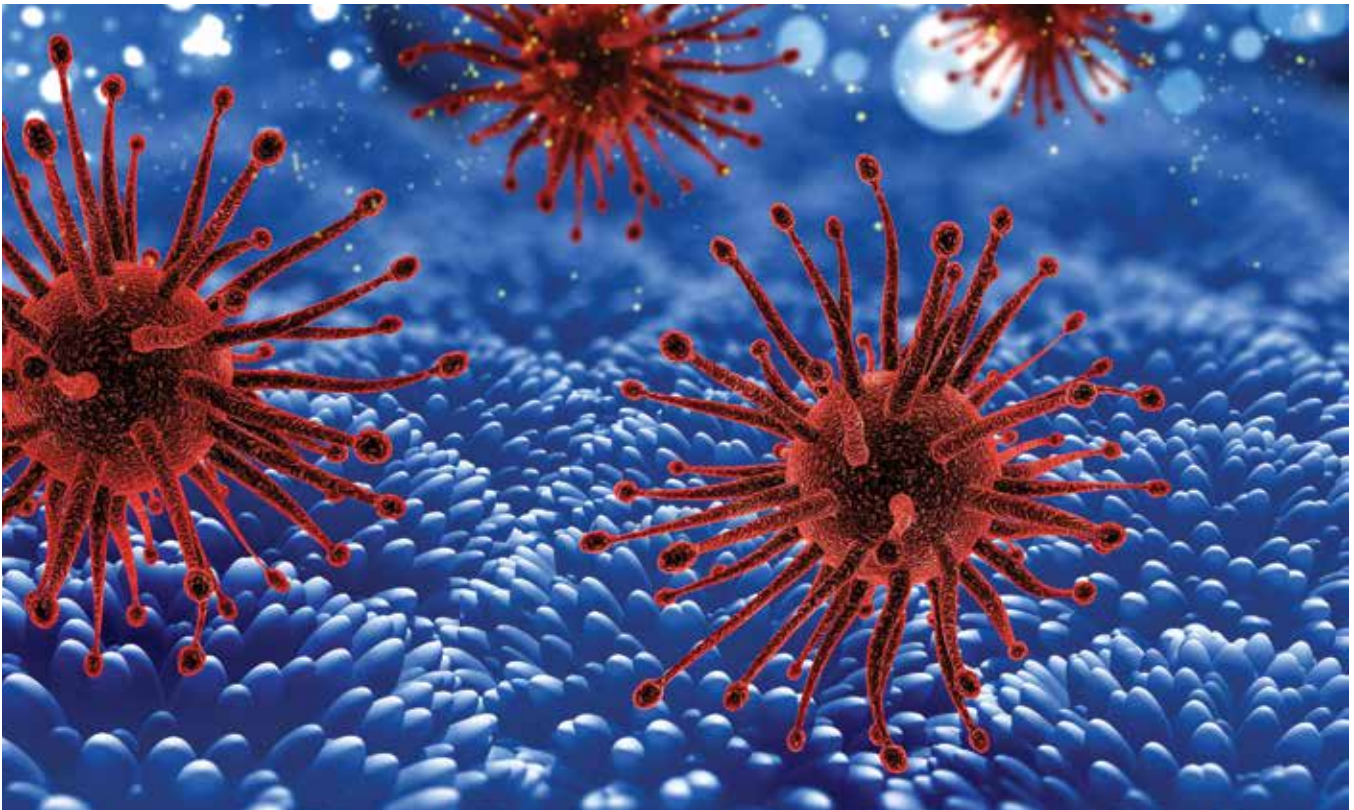
Kenia
RSA

**THE QUICKEST, EASIEST
AND MOST PRECISE
FULL-BODY SCAN AND
HEALTH-ANALYSIS
MACHINE**



INTRUDER

THE “INTRUDER” PROGRAM IS THE CUTTING-EDGE SPECIALIZED DEVELOPMENT OF THE INSTITUTE OF PRACTICAL PSYCHOPHYSICS IN THE FIELD OF DIAGNOSTICS AND THERAPY OF MICROBES: VIRUSES, BACTERIA, HELMINTHS AND FUNGI! IT IS ALSO INTENDED FOR THE PURPOSE OF EVALUATION OF THEIR RESISTANCE TO ANTIMICROBIAL, ANTIPARASITIC AND ANTIMYCOTIC PREPARATIONS



The importance of this development is determined by the appearance of panresistant super bacteria over the last years that are resistant to all antibiotics applied; this is why the NLS-method and the computer express evaluation of activity and resistance of a large number of pathogenic microorganisms simultaneously to all the existing antibacterial (antiparasitic) preparations may become the only possible alternative to modern medicine. The appearance of the ever growing number of new antibiotics and the progressively increasing number of the acquired resistance strains makes us urgently tighten the requirements to the accuracy and the speed of processes based on the existing evaluation methods and start developing brand-new modern computer methods of microorganisms' resistance evaluation methods.

KEY FEATURES

The method of computer NLS-analysis of activity and resistance evaluation of microorganisms to antibacterials developed by the Institute of Practical Psychophysics meets all modern requirements.

The most fundamental changes in the methodology of resistance evaluation to antibiotics in the process based on the method of computer NLS-analysis are connected with the creation of:

- The concept of interpretational tracking of evaluation findings in regard to sensitivity to antibiotics. It is based on a non-linear building of models of the explored microorganism with the subsequent correction of the data obtained from spectral testing and the delivery of clinically oriented therapy recommendations;
- The concept of virtual etalons of group preparations that allows to significantly reduce the time and scope of examination in order to obtain trustworthy results;
- The mathematic model of systems which control the accuracy of the antibiotic sensitivity evaluation that allows to significantly reduce the probability of getting wrong results;
- The spectral-wave method of evaluation of activity and sensitivity to antibiotics of microorganisms that allows to evaluate the level of internal entropy in albuminous compounds of molecules in certain tissues of a microorganism and in the bases of ribonucleic and deoxyribonucleic acids on exposure to antibacterials.



Without the consideration of the aforementioned points, it is currently impossible to get timely and trustworthy results of activity evaluation of microorganisms and their sensitivity to antibiotics and, consequently, to secure qualified application of modern antibacterial (antiparasitic) preparations.



Frequency of the internal generator	4,9 GHz
Accuracy of the research, anatomical structures	90-95 %
Number of digital models of organs and tissues including 3D models	475
Number of digitized spectral etalons of preparations and processes	5305

Etalons testing

- Virtual organ models
- Biochemical homeostasis
- Tumor markers
- Spectral-wave pathogenesis
- Nosology
- Microorganisms and helminths
- Bacteria
- Ectoparasites and helminths
- Viruses
- Fungi
- Allergens
- Allopathy
- Antibacterials
- Antivirals
- Antifungal preparations
- Anthelmintics
- Nutraceuticals
- Homeopathy
- Selection of various potencies of homeopathic preparations
- Phytoethanol
- Lithoethalons
- Microelements
- Probiotics
- Food
- Traditional Chinese cuisine dishes*
- Japanese food*
- Chinese medicine preparations*
- KoDa preparations*
- KAMPO preparations*

Main functions

- Bacterial examination
- Automatic search for bacteria, viruses and helminth
- Vegeto-test
- Smart filter
- Entropic analysis
- NLS-analysis
- Comparative analysis
- Automatic report creation

Corrective actions

- Metatherapy
- Production of medications

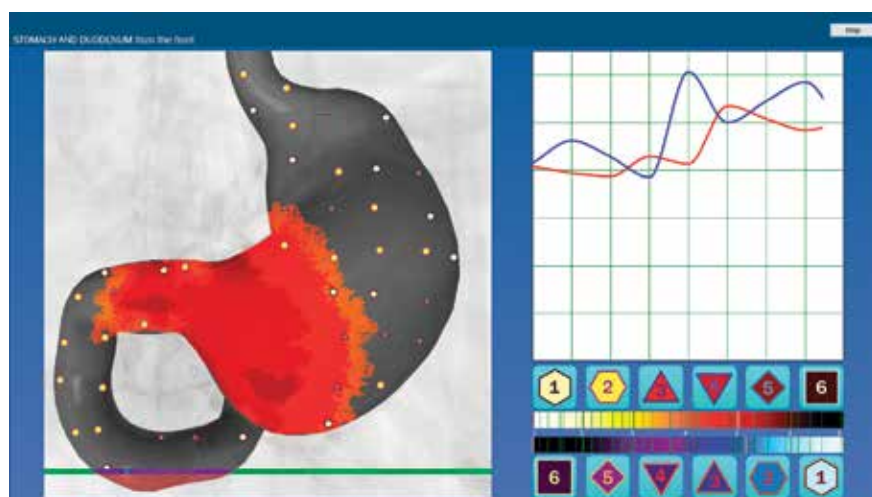
Foreign languages support

- Russian
- English
- German
- French
- Spanish
- Chinese traditional*
- Chinese simplified*
- Japanese*

On top of that, this technology considers a human body and the bacterial (parasitic) agents inhabiting it as a single system of biotic relations and defines certain functional changes in a human body caused by microorganisms as prerequisites for the appearance of not only infectious but also psychosomatic diseases. Based on this, the technology allows to clearly determine the examination procedure, avoiding unnecessary consultations and reducing the examination time, which is important in order to make a correct and timely diagnosis and prescribe the appropriate treatment.

WHAT'S NEW IN INTRUDER:

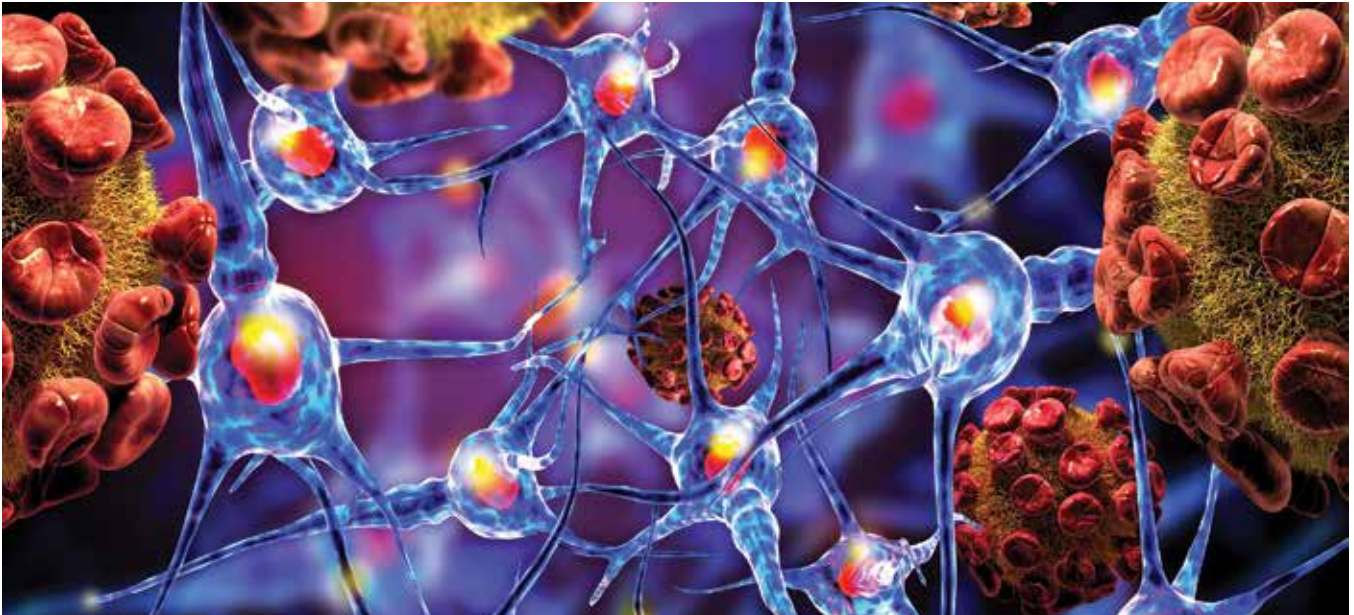
- Pseudo-3D evaluation system, over 100 new organ models.
- A new version of the report (protocol) form.
- Automated report (protocol) generation with three modes of detailization.
- Extended base of microorganisms (over 150 new etalons and images), separate groups of etalons – “Viruses”, “Helminths”, “Fungi” added.
- Automated search for bacteria, viruses and helminths.
- New groups of etalons added: “Antibacterial preparations”, “Antiviral preparations”, “Antiparasitic preparations”, “and Antifungal preparations”.
- The function “Fast selection of standard cross-sections” is added.
- Classification of process stages in entropic analysis.
- Graphical visualization of etalon type by criteria: Anabolic/catabolic and dry/humid.
- Upgrade of the mathematic model of data processing from the device.
- Improvement of localization algorithms of affected areas with the consideration of the process type (anabolic/catabolic).
- A new system of evaluation of tissue proliferation for young patients.



* For national versions

METAPATHIA GR CLINICAL

INCREASING ACCURACY OF DIAGNOSTIC BY USING
AN ORIGINAL 4D-TISSUE METHOD AND INDICATION
THE RESULTS OF PATIENT'S LABORATORY-RECEIVED
BIOCHEMICAL ANALYZES TO THE PROGRAM



For the first time in “Metapathia GR Clinical” software we introduced application of three-dimensional reconstruction of pictures on basis of data read with multidimensional research – a study of hollow organs according to principles of “virtual NLS-scopic” with use of LAPP system (ultrahigh performance parallel processors system). Preparation of pictures for visual analysis is fulfilled with help of 4-D Tissue original method invented by the Institute, that allows not only getting of virtual multidimensional pictures of anatomic structures, but also choose interesting biologic tissue – “additional dimension” and visualize bones, soft tissues and vessels simultaneously.

Frequency of the internal generator	4,9 GHz
Accuracy of the research, anatomical structures	90-95 %
Number of digital models of organs and tissues including 3D models	2643
Number of digitized spectral etalons of preparations and processes	6237

MAIN FEATURES

“Metapathia GR Clinical” innovations:

4-D Tissue. For the first time in Metapathia GR Clinical software we apply a three-dimensional pictures based on data read with multidimensional research – a study of hollow organs according to principles of “virtual NLSs-copy” with use of LAPP system (ultrahigh performance parallel processors system). Preparation of pictures for visual analysis is fulfilled with help of 4-D Tissue original method invented by the Institute, that allows not only getting virtual multidimensional pictures of anatomic structures, but also to choose particular biological tissue – “additional dimension” and visual bones, soft tissues and vessels simultaneously.

New feature “Emotional state” which allows us to evaluate emotional background of a patient and detect patient’s interrelation between development of mental and somatic pathology and emotional state in a real time. We added etalons of 73 emotional conditions, such as hope, faith, sorrow, anger, etc. to a section of psychoemotional condition screening.

For the first time we introduced Bach flower remedies into “Metapathia GR Clinical” software. We created and added to our software etalons of 38 flower preparations for seven main states of mind and for treatment of psychosomatic diseases. Bach flower remedies are vibratory remedies with specific frequency characteristics inherent to particular plants. Main purpose of these remedies is to harmonize mental and emotional sides of a humanbeing. Negative emotions provoke a progress of a disease.

The database of etalons is significantly extended:

Biochemical indices: new enzymes, hormones, oncological markers (cancer of pancreas, stomach, lungs, prostate, mammary gland and ovaries, etc.) are introduced.

Immunoglobulin of I order: which allow to reveal immunodeficiency states.

Microelements (introduced all chemical elements contained in human organism, dependence of chemical elements wave spectrums character on their location in periodic table is revealed) which give us a possibility to evaluate quantitatively indices of human organism homeostasis and diagnose its disorders on early stages. Using NLS analysis function it became possible to reveal and control content of various microelements in an organism. Using NLS-systems one may find out that microscopic amount of some chemical elements, such as gold, for example, is also important for preserving of good health condition. Many others microelements participate in functioning of vibratory and bio-electronic systems of human organism and his CNS.

Homeopathic preparations: new modern medications are introduced, a precise interconnection of wave spectrum analysis among humoral-constitutional peculiarities of an organism, blood group, Rhesus factor, some biochemical indices and spectrum of a homeopathic preparation.

Nutriceuticals: Database of food supplements is extended, in particular with NSP company products.

Allopathy. Database of modern allopathic preparations is significantly extended: new antibiotics, immunomodulators, probiotics and other medications are introduced.

Database of allergens is extended – introduced spectrums of heavy metals: strontium, cadmium, caesium, polonium and other radioactive nuclides.

The software chooses spectrums of various essences for treatment of specific diseases and energy disorders. 80 new etalons of organ – preparations – peptide bioregulators were introduced into database of “Metapathia GR Clinical” software.

Testing of etalons

- virtual models of organs
- biochemical homeostasis
- oncomarkers
- spectral-wave pathogenesis
- nosology
- microorganisms
- allergenes
- allopathy
- neutraceuticals
- homeopathy
- HEEL preparations
- choosing of homeopathic preparations potencies
- phytotherapy
- lithotherapy
- microelements
- psychoemotional condition
- Bach’s flower essences
- probiotics
- apitherapy
- medicinal cosmetics

Main functions

- bacterial research
- ultrastructure
- vegeto-test
- smart-filter
- entropic analysis
- NLS-analysis
- comparative analysis
- DeepVision
- plane section

Alternative diagnostics

- evaluation of BAP on hands and feet
- auriculodiagnostics
- iridology

Correcting actions

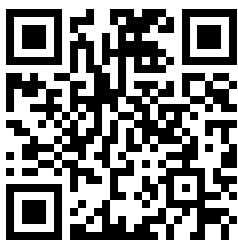
- meta-therapy
- lithotherapy
- phytotherapy
- correction of ppsychoemotional condition with Bach flower remedies
- preparation making

Languages

- russian
- english
- german
- french
- chinese traditional
- chinese simplified

METAPATHIA GR HOSPITAL

“METAPATHIA GR HOSPITAL” IS THE THIRD VERSION OF “METATRON” SOFTWARE PRODUCTS ADAPTED FOR EUROPEAN MARKET PRIMARILY FOR SPECIALISTS OF CONVENTIONAL, HOLISTIC AND SPORT MEDICINE



As well as “Metapathia GR Clinical” which was the pioneer of 3D visualization among the diagnostic complexes using the bioresonance principle, “Hospital” have carried on best traditions of 3D volume and diagnosis superaccuracy. Having taken all the best of the previous models, we have considered all wishes of our users, optimized functional possibilities, have added new etalons of organopreparations, microorganisms, probiotics and HEEL–preparations and many other things.

Frequency of the internal generator	4,9 GHz
Accuracy of the research, anatomical structures	90-95 %
Number of digital models of organs and tissues including 3D models	1944
Number of digitized spectral etalons of preparations and processes	6092

Testing of etalons

- Somatotypes
- Virtual organ models
- Biochemical homeostasis
- Tumor markers
- Spectral-wave pathogenesis
- Nosology
- Microorganisms and helminths
- Bacteria
- Ectoparasites and helminths
- Viruses
- Fungi
- Allergens
- Allopathy
- Nutraceuticals
- Homeopathy
- HEEL preparations
- Selection of various potencies of homeopathic preparations
- Phytotherapy
- Lithotherapy
- Microelements
- Psycho-emotional state
- Bach flower therapy
- Probiotics
- Apitherapy
- Food
- Medical cosmetics

Main functions

- Bacterial examination
- Ultrastructure
- Vegeto-test
- Smart filter
- Entropic analysis
- NLS-analysis
- Comparative analysis
- DeepVision
- MultiVision
- WideVision
- Cross-section with three perpendicular planes
- Transparency change of surrounding tissues
- Automatic report creation

Alternative diagnostics

- Evaluation of biologically active points on hands and feet (BAP)
- Auriculodiagnosics
- Iridology
- 12 pairs of Chinese meridians
- Chakras

Correcting actions

- Metatherapy
- Lithotherapy
- Phytotherapy
- Correction of psycho-emotional states with Bach flower therapy
- Production of medications

Languages

- Russian
- English
- German
- French
- Spanish

MAIN FEATURES

Optional equipment and possibilities of new software for improved stereoscopic visualization of 3D models, allowing to create an immersion into investigation effect and provide a better understanding of diagnostics results by means of connection to any 3D screen with polarised glasses where organs model will be shown. The device shows on a TV screen a high-quality stereoscopic image of examined organs, therefore increasing visualization quality of examination results.

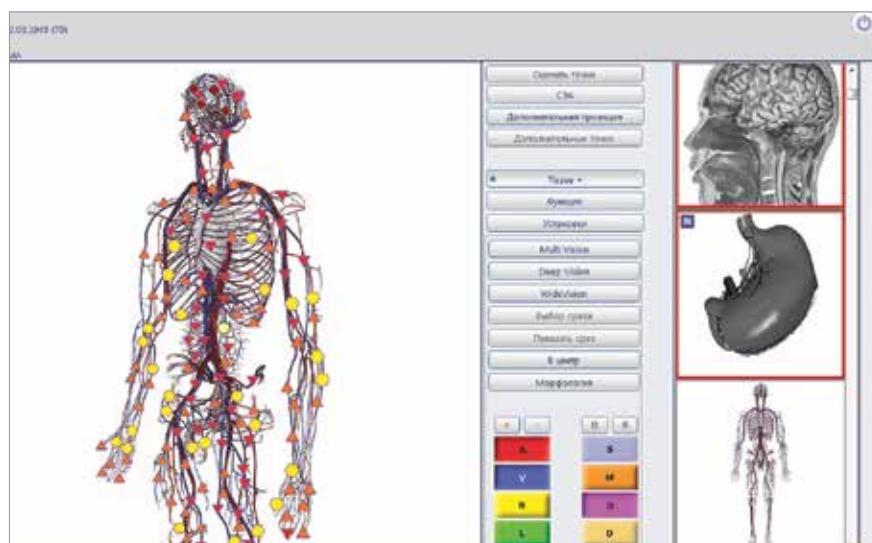
New databases of "Metapathia GR Hospital" software:

- homeopathic preparations by HEEL Company
- parasites and helminths
- body types

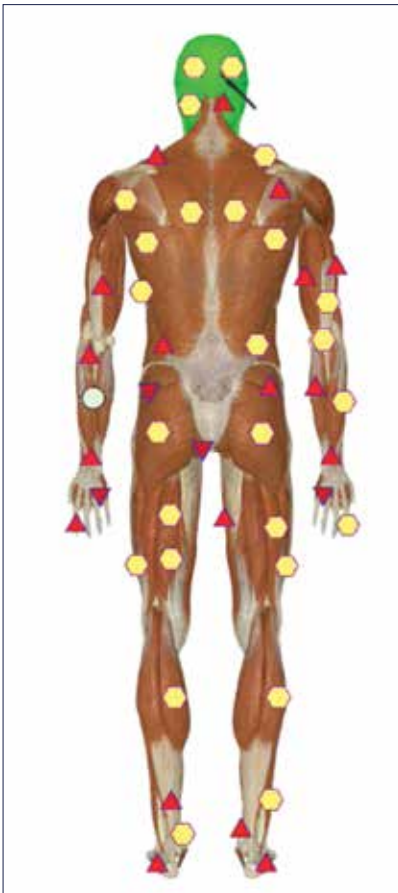
New software versions allow to identify six stages of an illness development:

- | | |
|------------------------|----------------|
| 1. psychophysiological | 4. endotoxic |
| 2. energoinformational | 5. symptomatic |
| 3. neuroendocrine | 6. terminal |

At the first three stages an illness is considered easily curable, at the fourth – curable, at the fifth – hardly curable, at the sixth – incurable.



COMMON FUNCTIONS OF SOFTWARE



Wide Vision

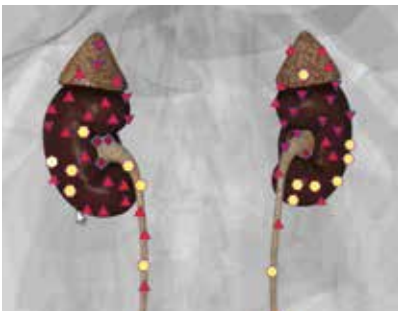
“Wide Vision” allows performing of segmentation, zooming and detailed reconstruction of separate studied anatomical structures. At the same time the studied object is moved to the center of a screen and other structures, preventing complete all-round visualization, are shaded.

Multi Vision

“Multi Vision” allows getting of not only virtual multidimensional images of anatomical structures, but to highlight bones, soft tissues, vessels and nerves as well (four-dimension color-coded NLS-data). The advantage of this feature is acquiring of accurate image of topographic-anatomic interrelation of tissues, vessels and nerves of a studied region, which increases quality of image perception. Also this feature allows quick, detailed and zoomed studying of separate anatomical structures, including tissues, vessels and nerves in 4D interactive rendering format.

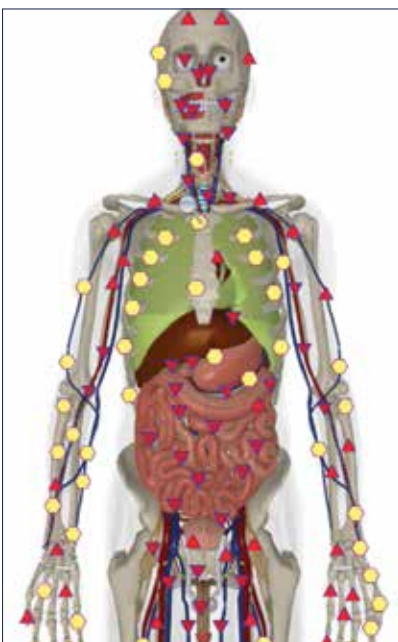
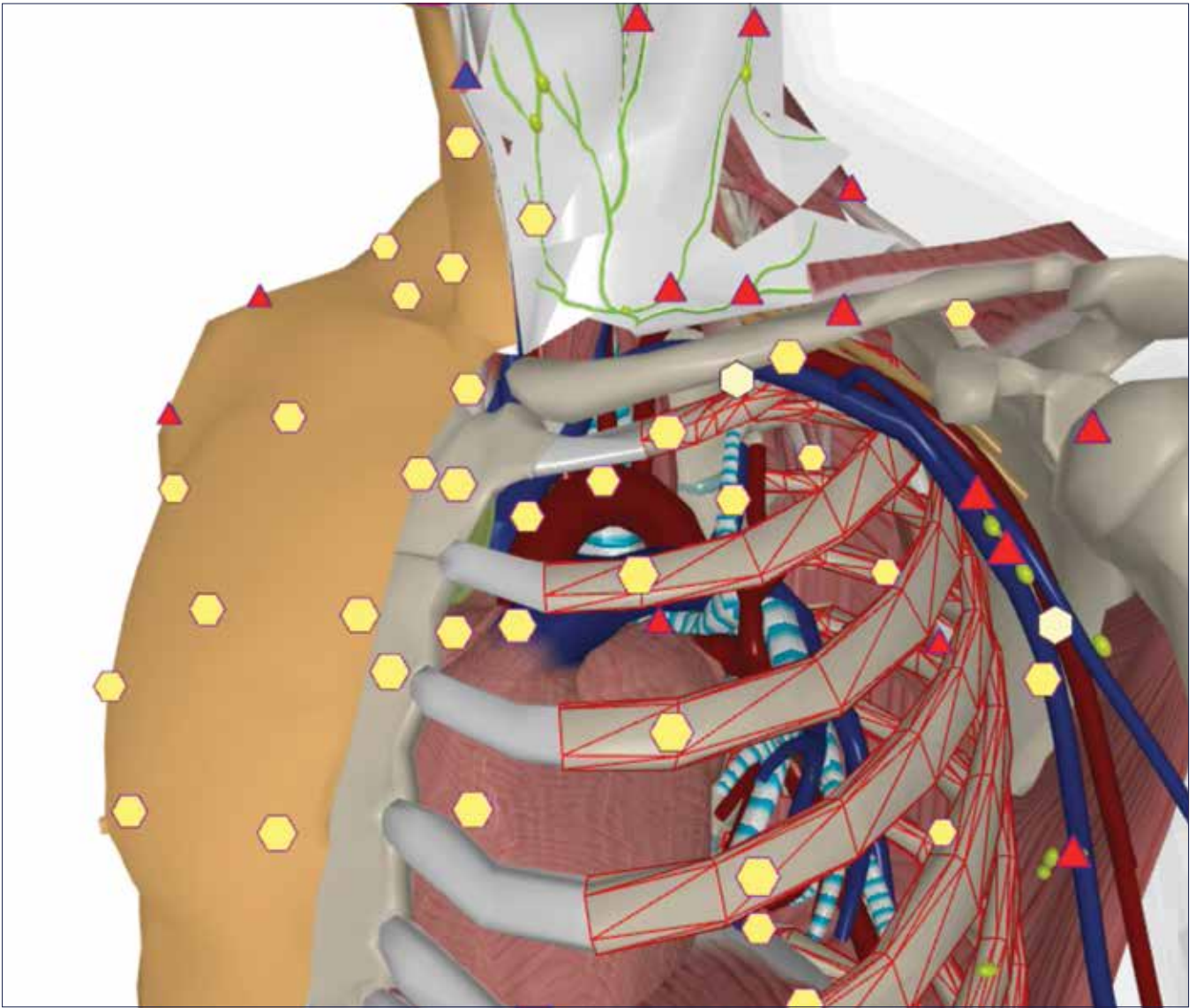
Deep Vision

“Deep Vision” – button allows visualizing of internal, deep structures of a body, normally hidden by other anatomic structures. In order to visualize these structures, after “Deep vision” button is pressed, point structure which blocks visualization of deeper structures with mouse. It will be covered by red meridian grid. Then press left mouse button and this structure will turn invisible and open deeper structures of body.



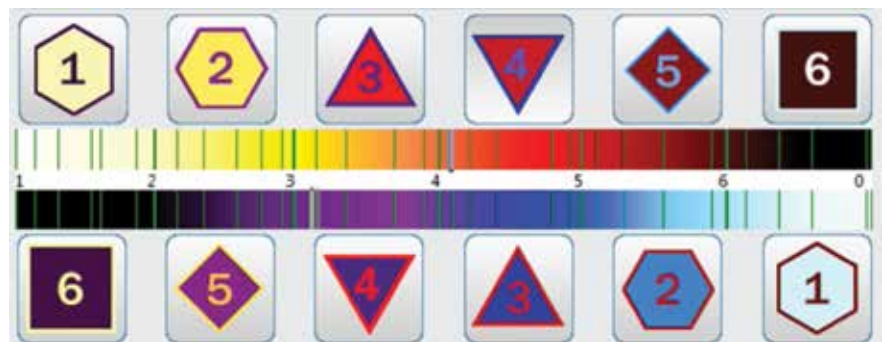
In addition to features of the previous versions, new software versions include a number of new 3D models in Full HD:

- Internal organs
- Skeleton
- Muscles
- Blood circulatory system
- Lymphatic system
- Nervous system
- Heart
- Cardiac chambers
- Cardiac vessels
- Cardiac conducting system
- Lungs
- Teeth
- External ear
- Chakras



12-point Fleindler's scale

Using 12-point Fleindler's scale, these software versions allow evaluation of catabolic (Yin-related) processes, accompanied by absorption of information. These are proliferative and degenerative-proliferative processes (benign and malignant tumors, polyps, miomas, mastopathy), which were extremely difficult to diagnose with devices of previous generations.



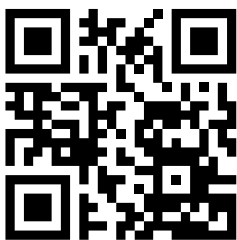
PRANA

A NEW AYURVEDIC MEDICINE SOFTWARE WHICH COMBINES METAPHYSICS AND THE WISDOM OF ANCIENT INDIA WITH TECHNOLOGY AND SCIENTIFIC POTENTIAL OF MODERN WORLD



“Prana” means life energy, life in yoga, traditional Indian medicine and esoterics.

Prana exists in various quantity everywhere – in food, people and all living creatures, in trees, plants, in the air, however, its quality changes depending on where it is located. In other words, from practice of Devotion or Virtue the quality of Prana is improved, then they say that karma of a person is improved too. The worsened quality of Prana generally means more bad karma and less light. E.g. that part in a person which normally is called “bad” means an area of polluted Prana.



Frequency of the internal generator	4,9 GHz
Accuracy of the research, anatomical structures	90-95 %
Number of digital models of organs and tissues including 3D models	1944
Number of digitized spectral etalons of preparations and processes	6092

Testing of etalons

- Modality: dosha
- Virtual organ models
- Biochemical homeostasis
- Tumor markers
- Spectral-wave pathogenesis
- Nosology
- Microorganisms and helminths
- Bacteria
- Ectoparasites and helminths
- Viruses
- Fungi
- Allergens
- Allopathy
- Nutraceuticals
- Homeopathy
- Selection of various potencies of homeopathic preparations
- Phytotherapy (Bhaishajya Kalpana)
- Minerals (Rasa shastra)
- Microelements
- Psycho-emotional state
- Bach flower therapy
- Probiotics
- Apitherapy
- Food
- Ayurvedic food
- Ayurvedic preparations (Dravyaguna)
- Ayurvedic preparations of Sri Lanka
- Baraka preparations
- Medical cosmetics

Main functions

- Bacterial examination
- Ultrastructure
- Vegeto-test
- Smart filter
- Entropic analysis
- NLS-analysis
- Comparative analysis
- DeepVision
- MultiVision
- WideVision
- Cross-section with three perpendicular planes
- Transparency change of surrounding tissues
- Automatic report creation

Alternative diagnostics

- Evaluation of biologically active points on hands and feet (BAP)
- Auriculodiagnostics
- Iridology
- 12 pairs of Chinese meridians
- Chakras

Correcting actions

- Metatherapy
- Lithotherapy
- Phytotherapy
- Correction of psycho-emotional states with Bach flower therapy
- Production of medications

Languages

- Russian
- English

MAIN FEATURES

“PRANA” is the specialised ayurvedic medicine software. In addition to other software this add-on has following features:

- modalities – dosha
- it contains the base of etalons of traditional ayurvedic medications
- ayurvedic phytotherapy bhaishajya kalpana
- minerals Rasa Shastra
- ayurvedic medications (Sri Lanka)
- medications Baraka
- dishes of traditional Indian cuisine.

Modalities – Dosha Prakriti

This chapter gives a detail explanation of three types of body constitutions – dosha. The software “Prana” gives possibility to define, judging on the characteristics of wave spectrum, to which type of body constitution a person can be assigned. It is important to remember that these mathematic models reflect a pure element of its elements, however, there is no individual body constitution which contains only one element. On the contrary, every person is a combination of three elements where one or two elements dominate. This can be determined by building a virtual model of type of body constitution. The results of determining a individual type of body constitution can deliver information about all characteristic aspects of life, such as diet, disposition to various diseases, sustentation of specific regime, which promotes good health.

Chakras:

Chakra Muladhara is responsible for regenerative processes and the immune system. Organs: the colon, bladder, prostate, uterus, feet, kidneys, adrenal glands.

Chakra Svadhishtana is responsible for organs: genitals, celiac plexus, appendix, gonads.

Chakra Manipura is responsible for the digestive system. Organs: stomach, pancreas, gallbladder, liver.

Chakra Anahata is responsible for the circulatory system. Organs: heart, lungs, circulatory system, thymus.

Chakra Vishuddha is responsible for hearing and breathing. Organs: the larynx, thyroid gland, vocal cords, trachea, bronchi.

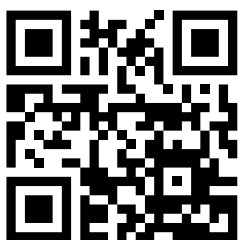
Chakra Ajna is responsible for the nervous system. Organs: the pituitary gland, the autonomic nervous system, eyes, nose, spine.

SAKURA

NEW SAKURA SOFTWARE CREATED
SPECIALLY FOR THE JAPANESE MARKET.
THERE ARE TRADICIONAL JAPANESE MEDICINE,
FOOD AND KAMPO HERBAL REMEDIES



Kampo medicine is widely practiced in Japan and is fully integrated into the modern health care system. Kampo is based on traditional Chinese medicine and adapted to the Japanese culture. With minor modifications it is also accepted in Taiwan, from where it spread to the West.



KAMPO includes acupuncture, moxibustion sagebrush cigars and other components of traditional Chinese medicine. It focuses on treatment with herbal combinations (formulations). These products are manufactured at the factory with strictly observed the conditions. As a result, Japanese doctors focus on a small group of the formulas: from 148 formulations which are approved by Kampo system.

Frequency of the internal generator	4,9 GHz
Accuracy of the research, anatomical structures	90-95 %
Number of digital models of organs and tissues including 3D models	1944
Number of digitized spectral etalons of preparations and processes	6092

Testing of etalons

- Somatotypes
- Virtual organ models
- Biochemical homeostasis
- Tumor markers
- Spectral-wave pathogenesis
- Nosology
- Microorganisms and helminths
- Bacteria
- Ectoparasites and helminths
- Viruses
- Fungi
- Allergens
- Allopathy
- Nutraceuticals
- Homeopathy
- Selection of various potencies of homeopathic preparations
- KAMPO phytotherapy
- Lithotherapy
- Microelements
- Psycho-emotional state
- Bach flower therapy
- Probiotics
- Apitherapy
- Food
- Japanese food
- KAMPO preparations
- Medical cosmetics

Main functions

- Bacterial examination
- Ultrastructure
- Vegeto-test
- Smart filter
- Entropic analysis
- NLS-analysis
- Comparative analysis
- DeepVision
- MultiVision
- WideVision
- Cross-section with three perpendicular planes
- Transparency change of surrounding tissues
- Automatic report creation

Alternative diagnostics

- Evaluation of biologically active points on hands and feet (BAP)
- Auriculodiagnostics
- Iridology
- 12 pairs of Chinese meridians
- Chakras

Correcting actions

- Metatherapy
- Lithotherapy
- Phytotherapy
- Correction of psycho-emotional states with Bach flower therapy
- Production of medications

Languages

- Russian
- English
- Japanese

MAIN FEATURES

New sections of the data base etalons:

- Body types
- KAMPO medicinal preparations
- KAMPO phytotherapy
- Japanese food products

Body types:

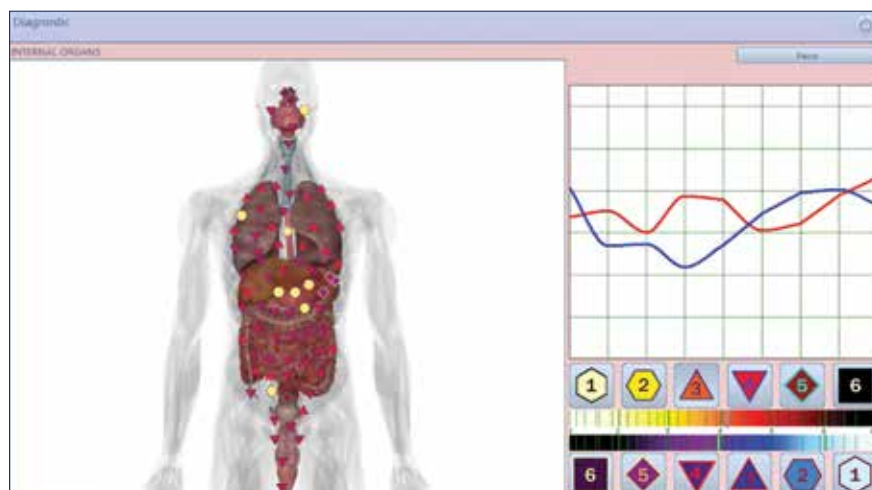
This section contains a detailed description of three body types:

- air-earth
- fire-metal
- water-wood

“Sakura” software, on the basis of wave spectrums characteristics, allows to evaluate a body type of a researched person.

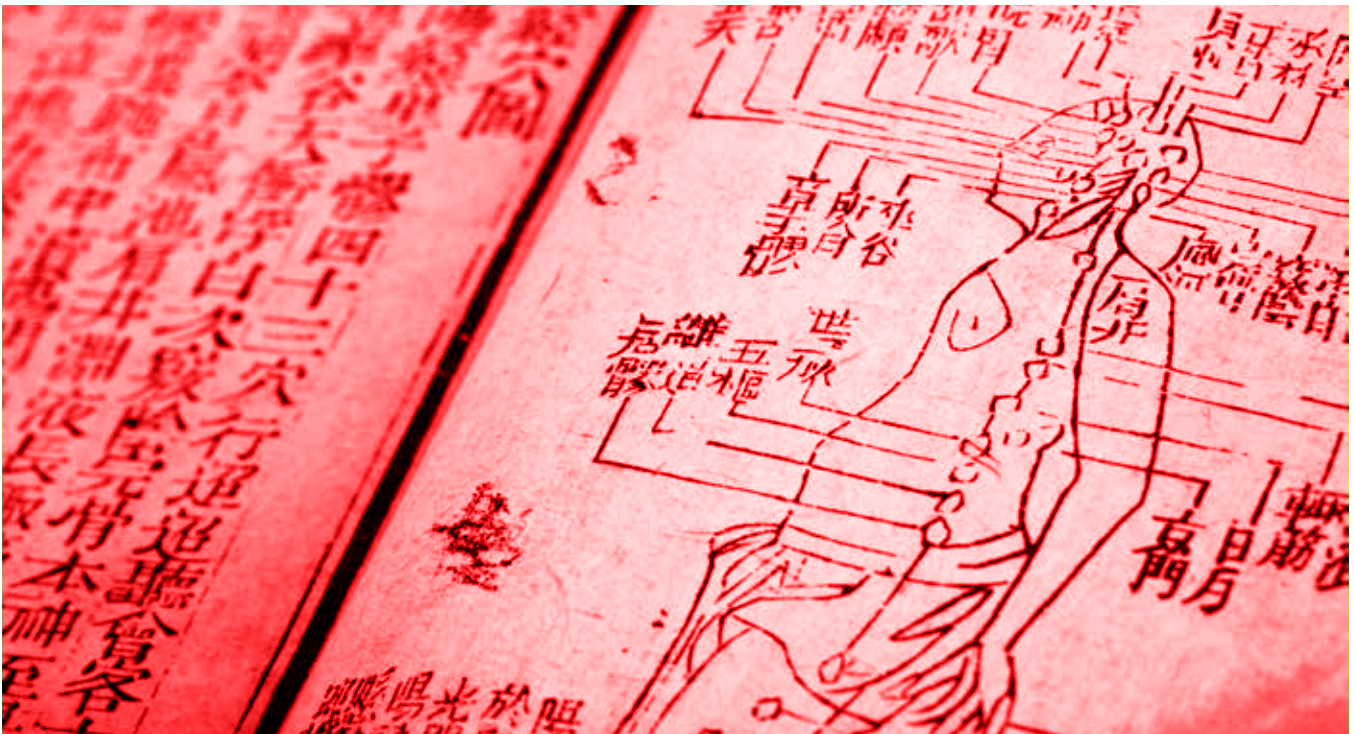
It must be noted, that these mathematical models reflect pure element of every component, but there is no body type consisting of one and only element. On the contrary, every person is a combination of all three elements with prevalence of one or two of them, which may be evaluated by building of a virtual model of body types.

Evaluation of a personal somatotype by the software allows to get data about typical aspects of life, such as diet, disposition to various diseases and regimen supporting good health condition.



RED DRAGON

RED DRAGON IS THE FIRST METATRON PRODUCT ADAPTED TO ALTERNATIVE MEDICINE SPECIALISTS IN GENERAL AND FOLLOWERS OF TRADITIONAL CHINESE MEDICINE IN PARTICULAR



Chinese medicine is technology for health resumption which contributed greatly into development of world medicine. The main distinctive feature of these traditional preparations which are used and perfected for thousand years is that they are made of natural components only. From the point of view of physiology Traditional Chinese Medicine preparations are more natural and thus safer and more helpful for human health than chemically synthesized drugs of the Western medicine.

Frequency of the internal generator	4,9 GHz
Accuracy of the research, anatomical structures	90-95 %
Number of digital models of organs and tissues including 3D models	1895
Number of digitized spectral etalons of preparations and processes	5823

MAIN FEATURES

Testing of etalons

- Virtual organ models
- Biochemical homeostasis
- Tumor markers
- Spectral-wave pathogenesis
- Nosology
- Microorganisms and helminths
- Allergens
- Allopathy
- Nutraceuticals
- Homeopathy
- Selection of various potencies of homeopathic preparations
- Phytotherapy
- Chinese herbs and naturopathic preparations
- Lithotherapy
- Microelements
- Psycho-emotional state
- Bach flower therapy
- Probiotics
- Apitherapy
- Food
- Traditional Chinese cuisine dishes
- Chinese medicine preparations
- KoDa preparations
- Medical cosmetics

Main functions

- Bacterial examination
- Ultrastructure
- Vegeto-test
- Smart filter
- Entropic analysis
- NLS-analysis
- Comparative analysis
- DeepVision
- Cross-section with a plane

Alternative diagnostics

- Evaluation of biologically active points on hands and feet (BAP)
- Auriculodiagnostics
- Iridology
- 12 pairs of Chinese meridians

Correcting actions

- Metatherapy
- Lithotherapy
- Phytotherapy
- Correction of psycho-emotional states with Bach flower therapy
- Production of medications

Languages

- Russian
- English
- German
- French
- Chinese traditional
- Chinese simplified

While having all principal functions of “Metapathia GR Clinical” software, “Red Dragon” software includes some additional features:

- In addition to Russian, English and German languages the new soft-ware supports Chinese and Japanese languages.
- Traditional Chinese Medicine section contains more than 600 etalons of TCM preparations, and also etalons of healing food products and dishes.
- For the first time the new software displays 14 Chinese meridians. Altogether there are 12 pairs of main organ channels corresponding to 12 main organs of Traditional Chinese Medicine and 2 non-pair meridians on human body. All main channels are linked into one system. One transforms into another in strict succession with Chi flow. This live energy is distributed to the whole organism through the channels and unites all functional blocks of an organism.
- Lithotherapy. The new software has spectrums of minerals and jewels. It allows to select a jewel for a person strictly individually in compliance with biological compatibility and carry out lithotherapy – treatment of an organism by mineral’s spectrum.

Special molecular composition of crystal structures provides energy impact to cellular and biomolecular systems of an organism. Some jewels may enter into specific harmonic resonance with certain parts of our organism. Vibrational energy is transferred to a certain molecular system and it harmonizes Yin and Yang, stabilizes biochemical processes, improves level of cellular structure, restores unhealthy organ and increases tendencies for recovery.

- “Red Dragon” software has feature of three-dimensional reconstruction of pictures on the basis of data acquired during multidimensional examination – study of hollow organs according to principle of “virtual NLS-scopy” by using of LAPP system (system of parallel processors of ultrahigh computing power and performance). Preparation of NLS pictures for visual analysis is fulfilled with help of 4-D Tissue original method invented by the Institute, that allows not only getting of virtual multidimensional pictures of anatomic structures, but also choose interesting biologic tissue – “additional dimension” and visualize bones, soft tissues and vessels simultaneously.

GOLDEN DRAGON

GOLDEN DRAGON IS THE SECOND IMPROVED VERSION OF THE METATRON SOFTWARE PRODUCTS ADAPTED TO ALTERNATIVE MEDICINE SPECIALISTS



“Metapathia GR Clinical” and “Red Dragon” were the first programs among bioresonance systems working with 3D-visualization of organs and tissues that greatly increase the accuracy of diagnostic and gave new possibilities in practising of NLS-analysis. Golden Dragon become the next level in applying 3D-technology in bioresonance that significantly expanded specialists’ opportunities of finding and localizing causes of organism’s particular disfunctions.

Frequency of the internal generator	4,9 GHz
Accuracy of the research, anatomical structures	90-95 %
Number of digital models of organs and tissues including 3D models	1944
Number of digitized spectral etalons of preparations and processes	6167

Testing of etalons

- Somatotypes
- Virtual organ models
- Biochemical homeostasis
- Tumor markers
- Spectral-wave pathogenesis
- Nosology
- Microorganisms and helminths
- Bacteria
- Ectoparasites and helminths
- Viruses
- Fungi
- Allergens
- Allopathy
- Nutraceuticals
- Homeopathy
- Selection of various potencies of homeopathic preparations
- Phytotherapy
- Chinese herbs and naturopathic preparations
- Lithotherapy
- Microelements
- Psycho-emotional state
- Bach flower therapy
- Probiotics
- Apitherapy
- Food
- Traditional Chinese cuisine dishes
- Chinese medicine preparations
- KoDa preparations
- Medical cosmetics

Main functions

- Bacterial examination
- Ultrastructure
- Vegeto-test
- Smart filter
- Entropic analysis
- NLS-analysis
- Comparative analysis
- DeepVision
- MultiVision
- WideVision
- Cross-section with three perpendicular planes
- Transparency change of surrounding tissues
- Automatic report creation

Alternative diagnostics

- evaluation of biologically active points on hands and feet (BAP)
- Auriculodiagnosics
- Iridology
- 12 pairs of Chinese meridians
- Chakras

Correcting actions

- Metatherapy
- Lithotherapy
- Phytotherapy
- Correction of psycho-emotional states with Bach flower therapy
- Production of medications

Languages

- Russian
- English
- Chinese traditional
- Chinese simplified

MAIN FEATURES

In addition to general features of the whole model line, it includes:

- identification of body types
- choosing from TCM preparations
- Chinese herbs and naturopathic preparations
- KoDa Pharmaceutical preparations
- Chinese cuisine

Meridians

In total there are 12 pairs of main organ channels on a human body, corresponding to 12 main organs of Chinese traditional theory, and 2 non-paired meridians. All main channels are linked into one network. One transits into another with a strict order of Chi flow. Through these channels life energy is distributed in an organism, it links all functional units of an organism together.

JING-LUO – is a teaching of 14 meridians; it is one of the main teachings of Traditional Chinese Medicine. Jing-luo explains physiological functions and pathological changes of human organism and is used for diagnostics and treatment. It is also a basis for acupuncture. It is considered that function of a meridian is to ensure flow of Chi, support functional activity of organs and harmonize Yin and Yang in an organism. In case of pathology changing of one organ's function inevitably changes functioning of other organs, i.e. whole organism becomes involved into an unhealthy process.

Chakras








In the section "Traditional Diagnosis", in addition to assessment of 14 Chinese meridians, aurikulo-and iridology, in the new program there is possibility of assessment of 7 charkas on Fleyndler's scale.

Chakras represent the special power centers of thin bodies; each of them is knotted with certain nerve and gland of incretion of the person. Chakras transform energy of the highest types (measurements, or frequency) to the hormonal secrets rendering considerable influence on functioning of organism.

The main chakras (in particular crown, frontal, throat) represent thin bodies of perception thanks to them phenomena like intuition and clairvoyance are possible.

Charkas are connected among each other and with certain parts of body, the power channels known as nadi, forming together with them charkas/nadi system.

COMPARATIVE TABLE

							
Internal generator frequency	4,9 CHz	4,9 CHz	4,9 CHz	4,9 CHz	4,9 CHz	4,9 CHz	4,9 CHz
Examination accuracy, anatomic structures	90 - 95 %	85 - 90 %	90 - 95 %	90 - 95 %	90 - 95 %	90 - 95 %	90 - 95 %
Number of computer models of organs and tissues	475	2643	1944*	1944*	1944*	1895	1944*
Number of digitized spectral etalons of agents and processes	5305	6237	6092	6092	6092	5823	6167
6-point Fleindler scale (anabolic processes only)	-	+	-	-	-	+	-
12-point Fleindler scale (anabolic and catabolic processes)	+	-	+	+	+	-	+
12-point color-coded reference marking	+	-	+	+	+	-	+
The three-dimensional image reconstruction 4D-Tissue							
ETALONS TESTING							
Modality: dosha	-	-	-	+	-	-	-
Somatotypes	-	-	+	-	+	-	+
Virtual organ models	+	+	+	+	+	+	+
Biochemical homeostasis	+	+	+	+	+	+	+
Tumor markers	+	+	+	+	+	+	+
Spectral-wave pathogenesis	+	+	+	+	+	+	+
Nosology	+	+	+	+	+	+	+
Microorganisms and helminths	+	+	+	+	+	+	+
Bacteria	+	-	+	+	+	-	+
Ectoparasites and helminths	+	-	+	+	+	-	+
Viruses	+	-	+	+	+	-	+
Fungi	+	-	+	+	+	-	+
Allergens	+	+	+	+	+	+	+
Allopathy	+	-	+	+	+	+	+
Antibacterials	+	-	-	-	-	-	-
Antivirals	+	-	-	-	-	-	-
Antifungal preparations	+	-	-	-	-	-	-
Anthelmintics	+	-	-	-	-	-	-
Nutraceuticals	+	+	+	+	+	+	+
Homeopathy	+	+	+	+	+	+	+
HEEL preparations	-	+	+	-	-	-	-
Selection of various potencies of homeopathic preparations	+	+	+	+	+	+	+
Phytotherapy	-	+	+	-	-	+	+
Chinese herbs and naturopathic preparations	*	-	-	-	-	+	+
KAMPO phytotherapy	*	-	-	-	+	-	-
Phytotherapy (Bhaishajya Kalpana)	-	-	-	+	-	-	-
Lithotherapy	-	+	+	-	+	+	+
Minerals (Rasa shastra)	-	-	-	+	-	-	-
Microelements	+	+	+	+	+	+	+
Psycho-emotional state	-	+	+	+	+	+	+
Bach flower therapy	-	+	+	+	+	+	+
Probiotics	+	+	+	+	+	+	+
Apitherapy	-	+	+	+	+	+	+
Food	+	-	+	+	+	+	+

* More than 700 flat cuts are combined in 14 three-dimensional human body systems

Traditional Chinese cuisine dishes	*	-	-	-	-	-	-	-	-	-	-	+	+	+
Japanese food	*	-	-	-	-	-	-	-	-	-	-	-	-	-
Ayurvedic food	-	-	-	-	-	-	-	-	-	-	-	-	-	-
Chinese medicine preparations	*	-	-	-	-	-	-	-	-	-	-	-	+	+
KoDa preparations	*	-	-	-	-	-	-	-	-	-	-	-	+	+
Ayurvedic preparations (Dravyaguna)	-	-	-	-	-	-	-	-	-	-	-	-	-	-
Ayurvedic preparations of Sri Lanka	-	-	-	-	-	-	-	-	-	-	-	-	-	-
Baraka preparations	-	-	-	-	-	-	-	-	-	-	-	-	-	-
KAMPO preparations	*	-	-	-	-	-	-	-	-	-	-	-	-	-
Medical cosmetics	-	+	+	+	+	+	+	+	+	+	+	+	+	+

MAIN FUNCTIONS

Bacterial examination	+	+	+	+	+	+	+	+	+	+	+	+	+	+
Automatic search for bacteria, viruses and helminths	+	-	-	-	-	-	-	-	-	-	-	-	-	-
Ultrastructure	+	+	+	+	+	+	+	+	+	+	+	+	+	+
Vegeto-test	+	+	+	+	+	+	+	+	+	+	+	+	+	+
Smart filter	+	+	+	+	+	+	+	+	+	+	+	+	+	+
Entropic analysis	+	+	+	+	+	+	+	+	+	+	+	+	+	+
NLS-analysis	+	+	+	+	+	+	+	+	+	+	+	+	+	+
Comparative analysis	+	+	+	+	+	+	+	+	+	+	+	+	+	+
DeepVision	-	-	-	-	-	-	-	-	-	-	-	-	-	-
MultiVision	-	-	-	-	-	-	-	-	-	-	-	-	-	-
WideVision	-	-	-	-	-	-	-	-	-	-	-	-	-	-
Cross-section with a plane	-	+	-	-	-	-	-	-	-	-	-	-	-	-
Cross-section with three perpendicular planes	-	-	-	-	-	-	-	-	-	-	-	-	-	-
Transparency change of surrounding tissues	-	-	-	-	-	-	-	-	-	-	-	-	-	-
Automatic report creation	+	-	-	-	-	-	-	-	-	-	-	-	-	-

ALTERNATIVE DIAGNOSTICS

Evaluation of biologically active points on hands and feet (BAP)	-	+	+	+	+	+	+	+	+	+	+	+	+	+
Auriculodiagnostics	-	+	+	+	+	+	+	+	+	+	+	+	+	+
Iridology	-	+	+	+	+	+	+	+	+	+	+	+	+	+
12 pairs of Chinese meridians	-	-	-	-	-	-	-	-	-	-	-	-	-	-
Chakras	-	-	-	-	-	-	-	-	-	-	-	-	-	-

CORRECTIVE ACTIONS

Metatherapy	+	+	+	+	+	+	+	+	+	+	+	+	+	+
Lithotherapy	-	+	+	+	+	+	+	+	+	+	+	+	+	+
Phytotherapy	-	+	+	+	+	+	+	+	+	+	+	+	+	+
Correction of psycho-emotional states with Bach flower therapy	-	+	+	+	+	+	+	+	+	+	+	+	+	+
Production of medications	+	+	+	+	+	+	+	+	+	+	+	+	+	+

ПОДДЕРЖКА ИНОСТРАННЫХ ЯЗЫКОВ

Russian	+	+	+	+	+	+	+	+	+	+	+	+	+	+
English	+	+	+	+	+	+	+	+	+	+	+	+	+	+
German	+	+	+	+	+	+	+	+	+	+	+	+	+	+
French	+	-	-	-	-	-	-	-	-	-	-	-	-	-
Spanish	+	+	+	+	+	+	+	+	+	+	+	+	+	+
Chinese traditional	*	+	-	-	-	-	-	-	-	-	-	-	-	-
Chinese simplified	*	+	-	-	-	-	-	-	-	-	-	-	-	-
Japanese	*	-	-	-	-	-	-	-	-	-	-	-	-	-

* For national versions

ORIGINAL EQUIPMENT OF “METATRON”



Original products of Institute of Practical Psychophysics, released by registered trademark Metatron, are easily identified from the fake on appearance and an arrangement of hardware and also on a fully functional software (no more crushed codes and nonworking buttons!).

In a standard packaging arrangement of “Metatron” included:

- Device is in a strictly stated form with a logo:
 - etched on a front panel (the old logo is used on machines applied in Russia, the new one is for other countries);
 - etched on a top panel a model's name;
 - etched on the back panel a serial number, release date, juristical data of manufacturer (IPP) and his official representative in Europe (IPP-Europe), information of correspondence to all the EU's requirements for this kind of products.
- Bioinductors with trigger sensor, rigorously stated form (no any ear-phones, manual electrodes and pulse fixers) with model name.
- Bioresonance camera, rigorously stated form, size and color.
- The notebook HP ProBook series with installed software.
- Power supply unit for device, network adapter for laptop, USB-cable.
- Branded case Rimowa or BWH.
- Technical documentation (user's manual and technical passport with IPP-Europe requisites).



Institute of Practical
Psychophysics-Europe s.r.o
Karla Engliše 3201/6 Prague
Czech Republic

info@nls-metatron.eu
nlsmetatron4025@gmail.com
420 608 263 067
420 778 083 777

www.nls-metatron.eu